

FRONT



SIDE



BACK

Specifications

Scanning Method	Linear/Convex Electronic Scan	
Display Mode	B, B/B, B/Z, B/M, M	
Range	0-20 mm to 0-240 mm (10mm step)	
Focusing Method	Full Digital Beam Forming, Continuous Dynamic Receiving Focus 4 Stage Dynamic Transmission Focus	
Ultrasound Frequency	2.8 to 12.5 MHz	
Display Monitor	12.1" SVGA Color LCD Monitor Wide Viewing Angle(horizontal:170°vertical:170°)	
Image Display	Up/Down, Left/Right, Positive / Negative	
Image Adjustment	B-gain, M-gain 36 to 100dB 1dB step Dynamic Range 35 to 95 dB 10dB step(1dB adjustable) STC 8 segments Acoustic Power 20% - 100%(10% step) Y correction 5 types(max. 10) H-res (Image Enhancement) Soft: OFF and 4 level Edge: OFF and 3 level Sweep Speed 5 steps	
Cine Memory	255 frames	
Measurement Function	Distance, Circumference / Area, Volume, Hip Joint, Histogram, Gestational Weeks Calculation , EFW, Velocity, LV Calculation	
Character Display	Hospital Name (40), Patient Name (30), ID (10), Age, Sex, DOB, LMP, Date, Time, Probe Type, Range, Gain, Acoustic Power, Dynamic Range, Gamma, H-res, Gray Scale, Frequency, Focus Information	
Probe Connector	2(selected by keyboard)	
Dimension	Approx. 335 (W) × 200 (D) × 380 (H) (mm)(keyboard closed) Approx. 335 (W) × 500 (D) × 380 (H) (mm)(keyboard opened)	
Net Weight	11 kg approx.	
Power Source	100V~240V AC 50/60Hz 150VA	
Data Storage	Still Image(Jpeg) Internal(100 images max.) External USB Memory	
External I/O	Moving Image(AVI) External USB Memory USB Memory Port ×1 Video Output ×2 Channel(composite video) External Monitor ×1 Analog RGB Printer Remote Port ×1 Foot Switch Port ×1	
Probes	5.0/3.5/2.8MHz 60R Convex probe HCS-536M HCS-436M 11.0/8.5/6.0MHz 40mm Linear probe HLS-584M 10.0/7.5/5.0MHz 50mm Linear probe HLS-575M HLS-475M 12.5/10.0/7.5MHz 30mm Linear probe(Small Parts) HLS-513M HLS-413 9.0/7.5/5.0MHz 12R Micro-Convex probe HCS-5712M 7.0/5.0/3.5MHz R Micro-Convex probe HCS-452M 9.0/7.5/5.0MHz 10R Micro-Convex probe HCS-4710M 9.0/7.5/5.0MHz 10R HCS-5710MV Micro-Convex probe(Transvaginal 120°) HCS-4710MV 9.0/7.5/5.0MHz 10R Micro-Convex probe(Endorectal 170°) HCS-5710MR	
Options	Video Printer Foot Switch (SFUS- 1GR 2.5 m) Biopsy Guide Water bag (HWB-02, HWB-03) Cassette(HWA-03, HWA-05, HWA-06) Cart	

\*The specifications and appearance are subject to change without notice for improvement.  
\*Made in Japan

DIAGNOSTIC SCANNER  
Convex / Linear Ultrasonic System

HS-2200

Our unique technology is the product of our originality and continual pursuance of achieving high quality. It is also our purpose to contribute in ways that will enhance society.



12.1 inch



HONDA ELECTRONICS CO.,LTD.  
Medical Division  
20 Oyamazuka, Oiwa-cho, Toyohashi, Aichi 441-3193, Japan  
TEL: +81-532-41-2514 FAX: +81-532-41-4441  
http://www.honda-el.com/  
Registered company for ISO 9001/ ISO 13485/ ISO 14001



For human medical  
Advanced technology and excellent image  
Quality embodied in stylish unit



MADE IN JAPAN





# DIAGNOSTIC SCANNER HS-2200

HS-2200 is a portable, high-resolution, black and white ultrasound imaging system incorporating the latest technologies available into an economical, user-friendly package. High density, multi-frequency transducers provide excellent image quality in rugged field conditions or at the office.

## image processing High Quality

**What you see is reality!**

Our HS-2200 Portable Linear/Convex Ultrasound System, the NEW standard for image quality and user efficiency in various applications of ultrasound procedures.

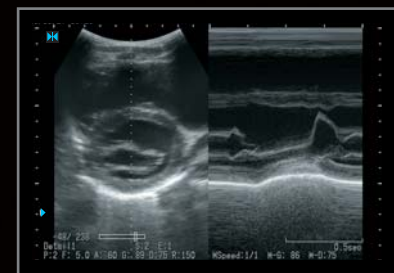
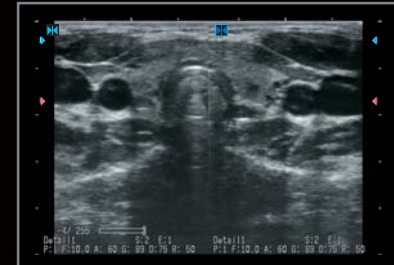
### Features

1. Full digital system
2. Sharp and smooth H-res technology
3. 128-channel high resolution probes
4. Wide screen in a compact body
5. Patient database function
6. Moving image storage
7. Compact body, easy to carry



### Full Digital System

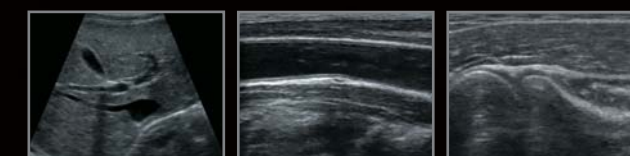
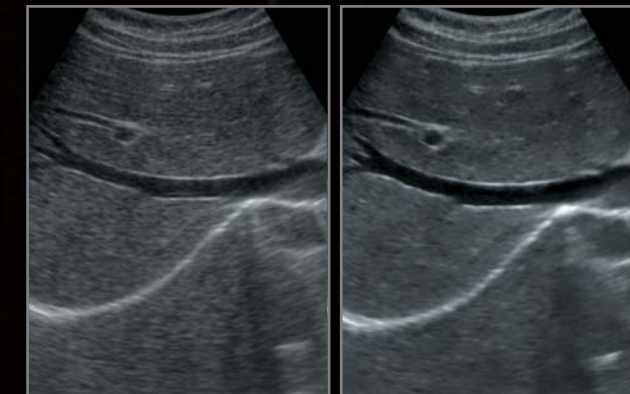
Complete digital technology enables a full range of continuous focus. Every pixel in the screen has optimized focus and the image is crisp and clear.



*H-res* (Our Resolution Technology)



Advanced image enhancement technology, "H-res™", brings perfect solution for visibility. Detail1 realizes good resolution in deeper organs. Detail2 visualizes delicate tissue construction in shallower parts. Mild suppresses flutters in smaller effect. You can also turn it OFF to have direct signal image.



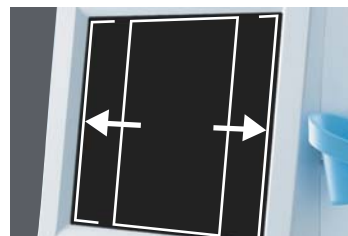




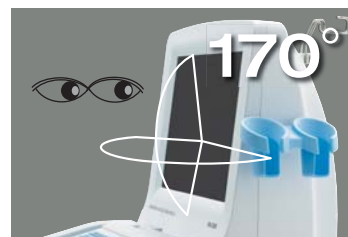
**12.1-inch**  
Absolute wide screen in a compact body.



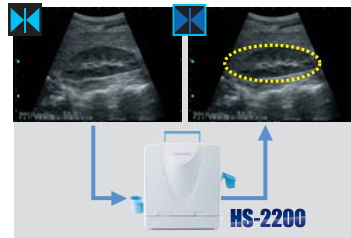
**Contrast**  
Rich gray scale with good linearity gives accurate image.



**SVGA 800×600**  
Wide image display on a standard SVGA screen.



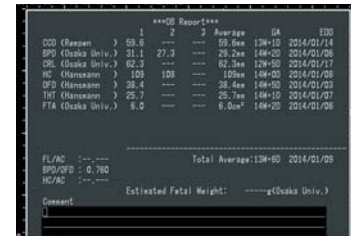
**170° Wide viewing angle**  
enables easy observation in a limited operating environment.



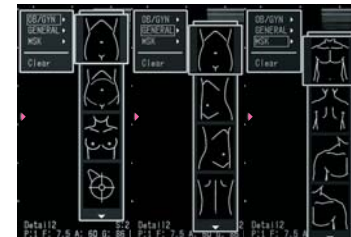
**Database**  
Scanned images can be stored by the patient ID. Measurement of a stored image is also possible.



**A-mode**  
indicates the intensity of echo signal by easy operation.



**Report**  
Measurement results can be displayed in a list for record.



**Body Mark**  
A variety of body marks are prepared to support various observation scenes.

## Clear + Contrast Harmonic Imaging


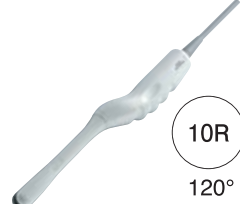







Harmonic imaging technology eliminates the side lobe artifact and brings the clear and identical image of organs with good contrast.



# Probes

Multi-frequency imaging allows more procedures to be performed with each transducer.

### Wide range of probe selection

- | Convex  | Transvaginal  |
|---|---|
|  <p>60R</p> <p><b>HCS-536M</b><br/><b>HCS-436M</b><br/>5.0/3.5/2.8 MHz</p>     |  <p>10R<br/>120°</p> <p><b>HCS-5710MV</b><br/><b>HCS-4710MV</b><br/>9.0/7.5/5.0 MHz</p>                                    |
| Linear  | Micro-convex  |
|  <p>50mm</p> <p><b>HLS-575M</b><br/><b>HLS-475M</b><br/>10.0/7.5/5.0 MHz</p>  |  <p>20R</p> <p><b>HCS-452M</b><br/>7.0/5.0/3.5 MHz</p>  |
|  <p>40mm</p> <p><b>HLS-584M</b><br/>11.0/8.5/6.0 MHz</p>                     |  <p>12R</p> <p><b>HCS-5712M</b><br/>9.0/7.5/5.0 MHz</p>  |
|  <p>30mm</p> <p><b>HLS-513M</b><br/><b>HLS-413</b><br/>12.5/10.0/7.5 MHz</p> |  <p>10R</p> <p><b>HCS-4710M</b><br/>9.0/7.5/5.0 MHz</p>  |
|   | Endorectal  |
|   | <p><b>NEW</b></p>  <p>10R<br/>170°</p> <p>※Biopsy guide is an optional.</p> <p><b>HCS-5710MR</b><br/>9.0/7.5/5.0 MHz</p> |

The screen size of HS-2200 is 12.1 inches wide, bringing excellent visibility. The latest LCD technology has made it possible to have a very wide 170° viewing angle and brilliant high contrast image. It insures clear image anytime, anywhere.

# Display Monitor Clearness



# Simple & Useful Operation

All necessary functions come in one compact unit.  
The compact body is easy to carry, so it is useful for not only in clinics or hospitals, but also for outside observation.  
Simple menu system is speedy for daily use.



**Carrying handle**  
Turns out for convenient portability.

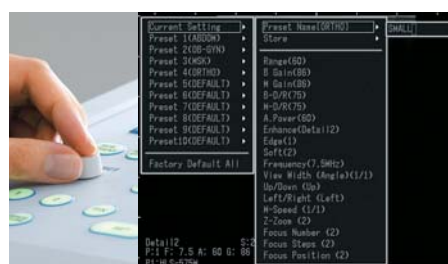


Full size keyboard with ergonomic design enables stress free operation.



### Keyboard

Ergonomic design with backlit keys supports easy operation even in a dark examination room. Direct key function is also prepared.

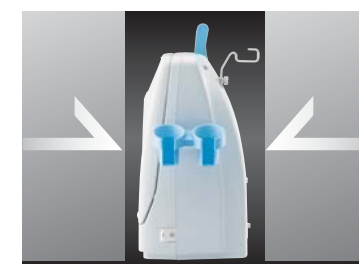


### Preset function

System setting can be assigned to function keys up to ten settings and can be easily recalled.

### Smooth operation anywhere

Foldaway keyboard and LCD panel make for a slim style unit that is easy to carry.



### Compact design

It fits in limited space with its slim style design.



### World network

We have a worldwide distributor network and supports the after service and maintenance after sales. Please contact your local distributor. They always have direct connection to Honda Electronics.

### Output

Image output signal is available in both PC format (SVGA) and TV format (NTSC/PAL)



### USB memory usable

When a USB memory is inserted, records can be done directly into the USB memory. Moving images can also be stored to the USB memory in AVI format.



### Made in Japan

This product is assembled in Japan. Honda produces even the ultrasound sensor ceramics in its own factory.