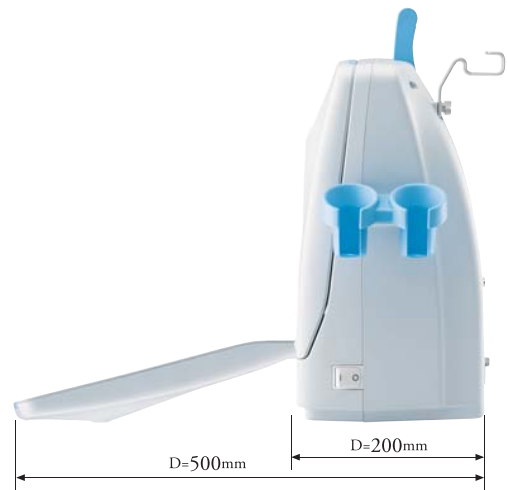


FRONT



SIDE



BACK

Specifications

Scanning Method	Linear/Convex Electronic Scan	
Display Mode	B, B/B, B/Z, B/M, M	
Range	0-20 mm to 0-240 mm (10mm step)	
Focusing Method	Full Digital Beam Forming, Continuous Dynamic Receiving Focus 4 Stage Dynamic Transmission Focus	
Ultrasound Frequency	1.5 to 12.5 MHz	
Display Monitor	12.1" SVGA LCD, 8 bits, 256 Gray Scales Wide Viewing Angle(horizontal:170°vertical:170°)	
Image Display	Up/Down, Left/Right, Positive / Negative	
Image Adjustment	B-gain, M-gain	36 to 100dB 1dB step
	Dynamic Range	35 to 95 dB 10dB step(1dB adjustable)
	STC	8 segments
	Acoustic Power	20% - 100%(10% step)
	γ correction	5 types(max. 10)
	H-res (Image Enhancement) Soft:	OFF and 4 level
	Edge:	OFF and 3 level
	Sweep Speed	5 steps
Cine Memory	255 frames	
Measurement Function	Distance, Circumference / Area, Volume, Tendon%, Histogram, Velocity, LV Calculation, Gestational Tables for all Large, Small Mixed Animal Practices	
Character Display	Hospital Name(40), Patient Name(30), ID (10), Age, Sex, DOB, Date, Time, Probe type, Range, Gain, Acoustic Power, Dynamic Range, Gamma, H-res, Gray Scale, Frequency, Focus Information	
Probe Connector	2(selected by keyboard)	
Dimension	Approx. 335 (W) × 200 (D) × 380 (H) (mm)(keyboard closed) Approx. 335 (W) × 500 (D) × 380 (H) (mm)(keyboard opened)	
Net Weight	11 kg approx.	
Power Source	100V~240V AC±10% 50/60Hz 150VA	
Data Storage	Still Image(Jpeg, DICOM)	Internal(100 images max.) External USB Memory
	Moving Image(AVI)	External USB Memory
External I/O	USB Memory Port	×1
	Video Output	×2 Channel(composite video)
	External Monitor	×1 Analog RGB
	Printer Remote Port	×1
	Foot Switch Port	×1
Probes	5.0/7.5/10.0MHz 50mm Linear probe(Rectal)	HLV-575M HLV-475M
	6.0/8.5/11.0MHz 40mm Linear probe	HLS-584M
	5.0/7.5/10.0MHz 50mm Linear probe	HLS-575M HLS-475M
	7.5/10.0/12.5MHz 30mm Linear probe(Small Parts)	HLS-513M HLS-413
	2.8/3.5/5.0MHz 80mm Linear probe	HLS-438
	5.0/7.5/9.0MHz 12R Micro-Convex probe	HCS-5712M
	3.5/5.0/7.0MHz 20R Micro-Convex probe	HCS-452M
	5.0/7.5/9.0MHz 10R Micro-Convex probe	HCS-4710M
	2.8/3.5/5.0MHz 60R Convex probe	HCS-536M HCS-436M
	5.0/7.5/9.0MHz 10R Micro-Convex probe(OPU)	HCV-4710MV**
	1.5/2.0/3.0MHz 120mm Linear probe	HLV4212M**
	1.5/2.0/3.0MHz 180mm Linear probe (Animal Science)	HLV4214M**
Options	Video Printer , Foot Switch Biopsy Guide , Stand Off	

**Special order probe
The specifications and appearance are subject to change without notice for improvement.
Made in Japan

DIAGNOSTIC SCANNER
Convex / Linear Ultrasonic System

HS-2200V

Our unique technology is the product of our originality and continual pursuance of achieving high quality. It is also our purpose to contribute in ways that will enhance society.



12.1 inch



For the small, large and mixed animal practice
Advanced technology and excellent image
Quality embodied in stylish unit



DIAGNOSTIC SCANNER HS-2200V

HS-2200V is a portable, high resolution, black and white ultrasound imaging system incorporating the latest technologies available into an economical, user-friendly package. High density, multi-frequency transducers provide excellent image quality in rugged field conditions or at the office.



image processing

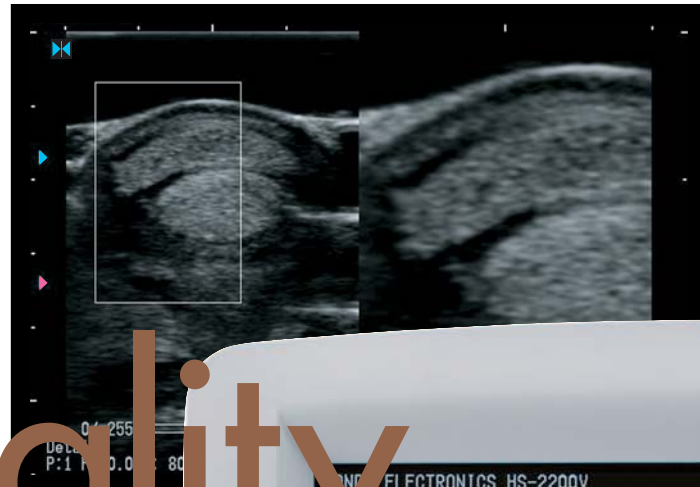
High Quality

What you see is reality!

Our HS-2200V Portable Linear/Convex Ultrasound System, the NEW standard for image quality and user efficiency in all large, small and mixed animal veterinary ultrasound procedures.

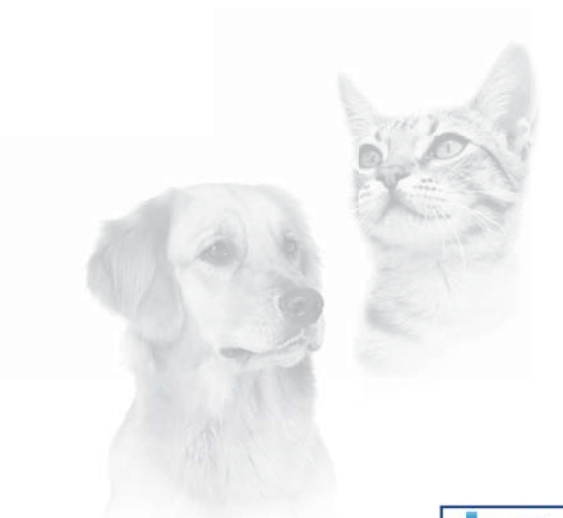
Features

1. Full digital system
2. Sharp and smooth H-res technology
3. 128-channel high resolution probes
4. Wide screen in a compact body
5. Patient database function
6. Moving image storage
7. Compact body, easy to carry



Full Digital System

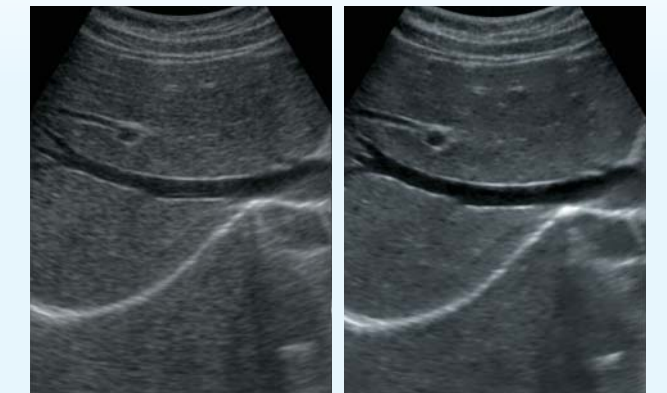
Complete digital technology enables a full screen of continuous focus.



H-res (Our Resolution Technology)

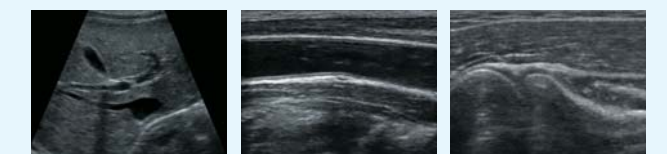


Advanced image enhancement technology, "H-res", brings perfect solution for visibility. Detail1 realizes good resolution in deeper organs. Detail2 visualizes delicate tissue construction in shallower parts. Mild suppresses flutters in smaller effect. You can also turn it OFF to have direct signal image.



H-res - OFF

H-res - ON

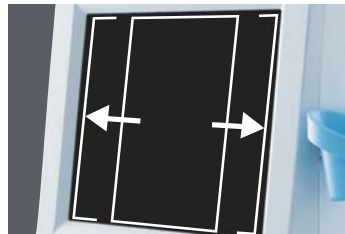




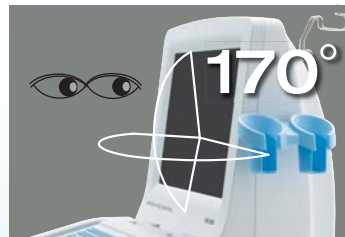
12.1-inch
Absolute wide screen in a compact body.



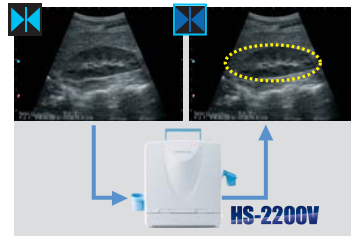
Contrast
Rich gray scale with good linearity gives accurate image.



SVGA 800×600
Wide image display on a standard SVGA screen.



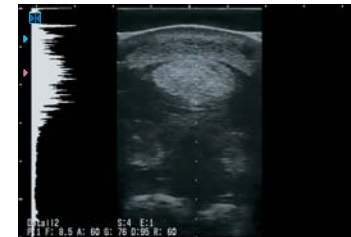
170° Wide viewing angle
enables easy observation in a limited operating environment.



Measurement function

Measurement is prepared for small, large, and mixed animal practice. Scanned images and measurement results can be saved under database with easy operation.

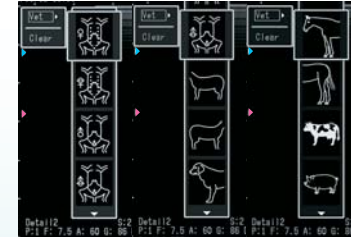
Database
Scanned images can be stored by the patient ID. Measurement of a stored image is also possible.



A-mode
indicates the intensity of echo signal by easy operation.



Tendon%
Measurement results can be displayed in a list for record.



Body Mark
A variety of body marks are prepared to support various observation scenes.

The screen size of HS-2200V is 12.1 inches wide, bringing excellent visibility. The latest LCD technology has made it possible to have a wide 170° viewing angle and brilliant high contrast image. It insures clear image anytime, anywhere.

Display Monitor Clearness



Probes

Multi-frequency imaging allows more procedures to be performed with each transducer.

Wide range of probe selection

Micro-convex

Small Animal: abdominal/cardiac/reproduction
Large Animal: (swine,sheep,goat,alpaca,llama) reproduction
Exotic Animal: specialty



HCS-452M
3.5-5.0-7.0 MHz

Micro-convex

Small Animal: abdominal/cardiac/reproduction
Large Animal: specialty tendon/MSK
Exotic Animal: specialty



HCS-5712M
5.0-7.5-9.0 MHz



HCS-4710M
5.0-7.5-9.0 MHz

Rectal

Small Animal: abdominal/reproduction
Large Animal: reproduction/tendon/pleural fluid/MSK
Exotic Animal: specialty



**HLV-575M
HLV-475M**
5.0-7.5-10.0 MHz

Linear

Small Animal: superficial/abdominal/reproduction
Large Animal: tendon/MSK
Exotic Animal: specialty



**HLS-575M
HLS-475M**
5.0-7.5-10.0 MHz



HLS-584M
6.0-8.5-11.0 MHz



**HLS-513M
HLS-413**
7.5-10.0-12.5 MHz

Special Order

Large Animal: (swine,sheep,goat,alpaca,llama) Meat Science



**HLV-4212M
HLV-4214M**
1.5-2.0-3.0 MHz

Special Order

Internal Biopsy Guide,
120 Deg Scan Angle:
Large Animal:
Ovum Pick-up



HCV-4710MV
5.0-7.5-9.0 MHz

Simple & Useful

Operation

All necessary functions come in one compact unit. The compact body is easy to carry so it is useful for not only in a clinic or hospital, but also for outside observation. Simple menu system is speedy for daily use.



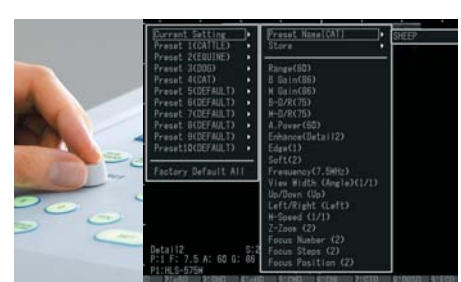
Carrying handle
Turns out for convenient portability.



Full size keyboard with ergonomic design enables stress free operation.



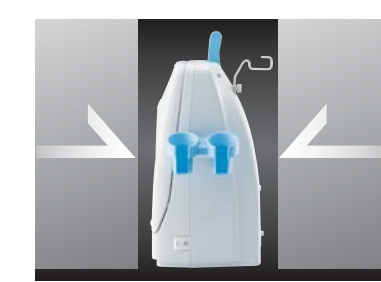
Keyboard
Ergonomic design with backlit keys supports easy operation even in a dark examination room. Direct key function is also prepared.



Preset function
System setting can be assigned to function keys up to ten settings and can be easily recalled.

Smooth operation anywhere

Foldaway keyboard and LCD panel make for a slim style unit that is easy to carry.



Compact design
It fits in the limited space with its slim style design.



World network

Honda has a worldwide distributor network and supports the after service and maintenance after sales. Please contact your local distributor. They always have direct connection to Honda Electronics.

Output

Image output signal is available in both PC format (SVGA) and TV format (NTSC/PAL)



USB memory usable

When a USB memory is inserted, records can be done directly into the USB memory. Moving images can also be stored to the USB memory in AVI format.



Made in Japan

This product is assembled in Japan. Honda produces even the ultrasound sensor ceramics in its own factory.

Palm rest

Silicon rubber palm rest supports your palm, allowing for comfort during use for a long time.